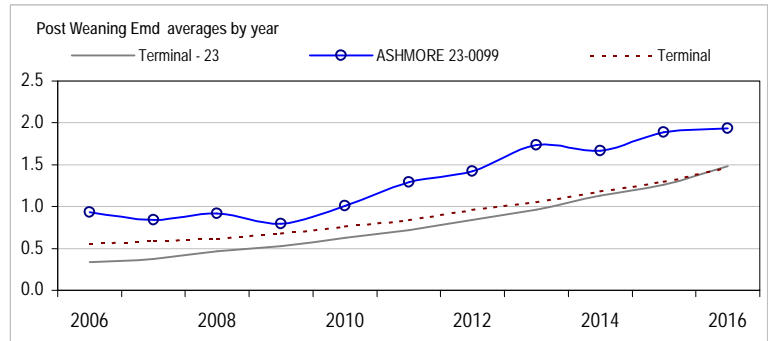
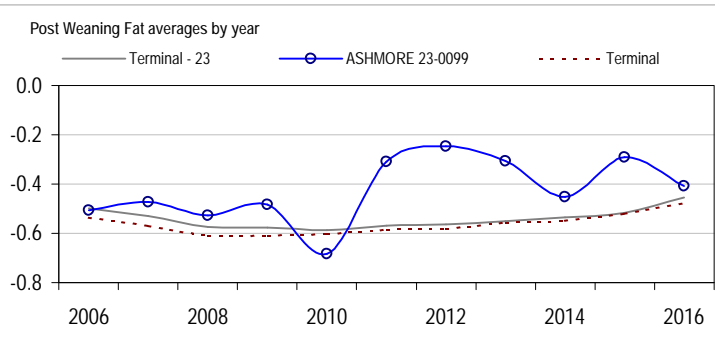
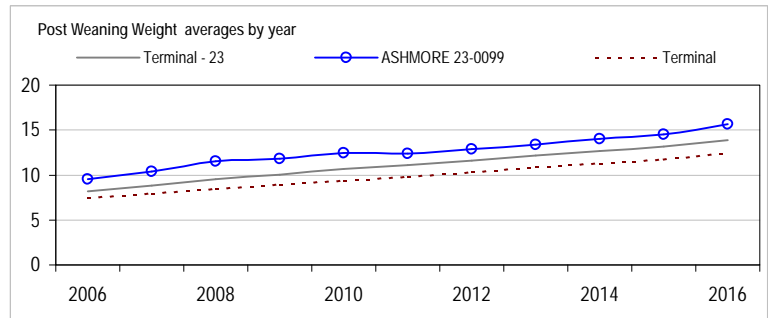
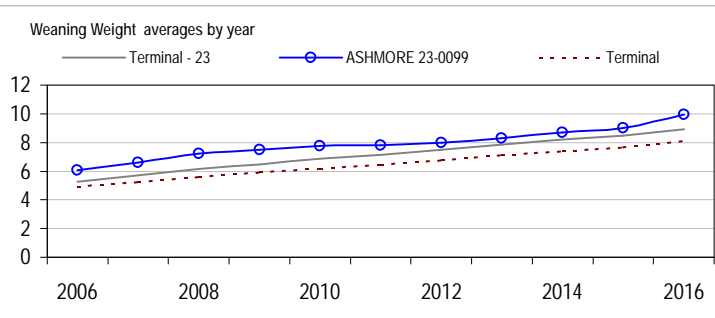
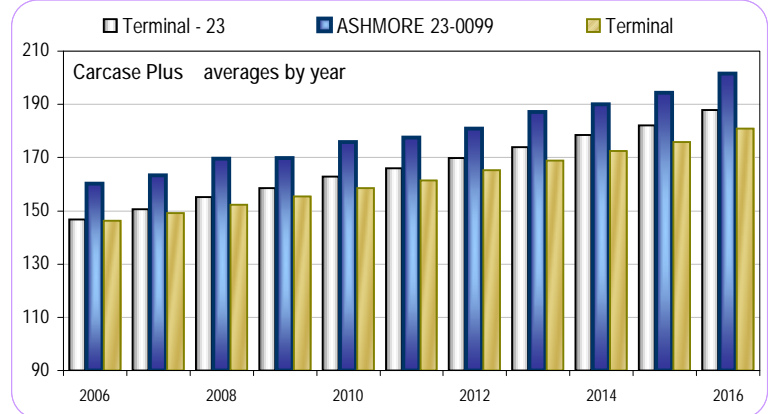
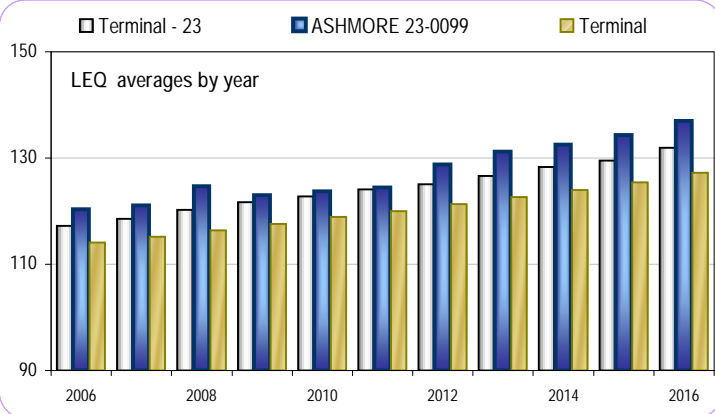
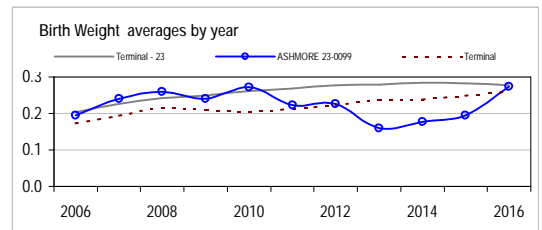


Analysis : **Terminal - 23**

Dated : **1 June 2017**



Terminal - 23								
	Bwt	Wwt	Pwwt	Pfat	Pemd	LEQ	Carcase+	Counts
2007	0.23	5.70	8.83	-0.53	0.38	118.5	150.6	35683
2008	0.24	6.15	9.54	-0.57	0.46	120.2	155.3	38860
2009	0.25	6.49	10.06	-0.58	0.53	121.7	158.6	39206
2010	0.26	6.88	10.65	-0.59	0.63	122.8	162.8	44222
2011	0.27	7.15	11.11	-0.57	0.72	124.0	166.0	47912
2012	0.28	7.49	11.59	-0.56	0.84	125.1	169.8	47940
2013	0.28	7.84	12.16	-0.55	0.97	126.7	174.0	45799
2014	0.28	8.19	12.70	-0.53	1.13	128.3	178.6	43720
2015	0.28	8.48	13.16	-0.52	1.26	129.5	182.2	45745
2016	0.28	8.91	13.87	-0.46	1.48	131.9	188.0	37837



Reports are prepared using data supplied by breeders and/or accredited operators for the analysis. SheepGenetics cannot guarantee the accuracy of this data. ASBV's are designed to estimate genetic merit of animals from the data supplied. Reports are provided to assist breeders but no liability is accepted for the outcome resulting from the use of this information.

ASHMORE 23-0099								
	Bwt	Wwt	Pwwt	Pfat	Pemd	LEQ	Carcase+	Counts
2007	0.24	6.62	10.39	-0.47	0.84	121.1	163.3	384
2008	0.26	7.21	11.52	-0.53	0.92	124.7	169.7	346
2009	0.24	7.50	11.80	-0.48	0.79	123.0	169.8	358
2010	0.27	7.76	12.42	-0.68	1.01	123.8	175.8	419
2011	0.22	7.80	12.37	-0.31	1.29	124.5	177.4	396
2012	0.23	7.98	12.88	-0.25	1.42	128.8	180.9	450
2013	0.16	8.29	13.35	-0.31	1.74	131.2	187.0	509
2014	0.18	8.68	14.01	-0.45	1.66	132.6	190.1	637
2015	0.20	9.00	14.52	-0.29	1.89	134.3	194.5	650
2016	0.27	9.94	15.65	-0.41	1.94	137.0	201.6	689

Linkage Summary	
ASHMORE 23-0099	
Weights	Yes
Carcase	Yes
WEC	Yes
Reproduction	Yes
Site Code	230099

05-June-2017

