

NEWSLETTER

June 2009

ASHMORE WHITE SUFFOLKS *“Genetics that perform”*

This newsletter is a brief update on activities at Ashmore. It also contains an introduction to our 2009 ram sale.

Fifth Generation Fischer likes her sheep

Those of you that made the ram sale last year might have caught a glimpse of the latest generation of Fischers – Troy and Nette’s little girl Isabelle was 4 days old on sale day. She is now 9 months old and quite a handful...she is mobile, eats like a horse and early indications suggest that she loves sheep. At least pulling at their ears! Her growth rate isn’t quite up to the speed of our White Suffolk lambs but we reckon she is a keeper all the same!



Seasonal outlook

The first 3 months of 2008 were exceptionally dry with very little rain recorded. Since then, a very good start to the season has been experienced by much of the state with good opening rains around ANZAC day and some follow up over the past 6 weeks. With seeding complete for most, we hope the rain continues especially including spring as this is a crucial season for many. We are certainly breeding our rams to withstand a more uncertain climate so that the lambs you produce reach market weights faster, are more efficient feed converters and respond faster when feed is available – all of which means there is less risk if the season gets tough.

Introducing the Lamb 2020 Index

LAMBPLAN have recently released a new index which has been designed to include extra traits that are relevant to prime lamb production. Carcase Plus which is the index we have been displaying for around 15 years represents a combination of selection to improve growth, muscling and leanness. For some time breeders such as ourselves have been pushing for an index that includes birth weight, weaning weight and worm egg count ASBVs as well as the traits in Carcase Plus. In response, LAMBPLAN have developed the LAMB 2020 index that puts more emphasis on early growth at both weaning and post-weaning, takes some emphasis off leanness and includes birth weight and improved internal parasite resistance as well as muscling.

MLA Sheep Research and Development Manager, Dr Alex Ball, said, "Leading rams on LAMB 2020 would produce lambs that were \$16-\$18/head more profitable than the progeny from an average ram". He also said, "LAMB 2020 is highly suited to producers supplying 20-24kg carcass weight lambs, especially Merinos". Hence this index will suit the majority of our clients and will be displayed in the 2009 catalogue.

Sale Team

The ram sale team is looking well at the moment and represents the best line up of high performance genetics we have ever bred. With our breeding program heading in the right direction for every major trait, each drop represents a steady accumulation of better genetics than the previous year. It is fair to say that the ram team to be offered this year represents some of the best genetics in the White Suffolk breed – you can view the Lambplan figures of our 2008-drop sale rams on our website which speak for themselves: www.ashmorewhitesuffolks.com/sales

A few stats about the flock of rams from which the sale team will be selected:

- 106 rams in top 5% of all terminals for LAMB 2020 Index (2020 Index over \$111)
- 74 rams in top 5% of all terminals for post weaning weight (ASBV over +14.5kg)
- 32 rams in top 5% of all terminals for post weaning muscle (ASBV over +2.2mm)
- 93 rams in top 20% of all terminals for Carcass Plus Index (C+ Index over 188)
- 142 rams have negative Worm Egg Count ASBVs (i.e. more worm resistant)

Therefore, there will be high performing rams to suit every market and environment in the sale.

Every sale ram will be above the White Suffolk breed average for performance, which means every ram is going to produce you more valuable lambs than breed average White Suffolk rams. This gap is widening because the Ashmore sheep are improving at a faster rate than the rest of the White Suffolk breed as well as other Terminal breeds. The sale team display excellent growth rates (turn lambs off faster or heavier weights) and impressive muscling (higher value carcasses).

Our **Annual on property ram sale is on Monday 28th of September @ 1pm** – and don't forget Rhonda's famous roast lamb rolls for lunch! Be sure to mark this date on your calendar, we look forward to seeing you then. All the best for the season.

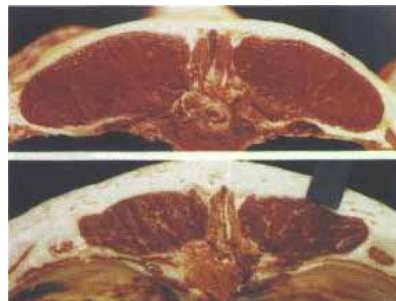
Yours sincerely,
Brian, Rhonda, Troy and Nette Fischer

Contact Details

Brian	Troy
P: 08 85254068	08 85254378
M: 0428826568	0429131277

**Do you want
to breed this?**

Or this?



Ask yourself...

Website recently updated:

www.ashmorewhitesuffolks.com

