

18th
Annual
Sale



ASHMORE
WHITE SUFFOLKS

Genetics that Perform

2010 Production Sale Catalogue

**Offering: 8 Quality Stud Rams,
138 Quality Performance Tested Flock Rams**

MONDAY 27th SEPTEMBER, AT ASHMORE, WASLEYS, 1PM

www.ashmorewhitesuffolks.com/sales



Ashmore – RB, RJ, TM & JI Fischer,
Flock No. 99

The rams presented in this year's sale are by the industry's leading sires and include some of the highest performing rams in the White Suffolk breed.

Faster growth, more muscle = more valuable lambs!

Ashmore is committed to the Prime Lamb industry, in particular, we are focused on adding value to the prime lambs that you produce through the rams that we breed. This is achieved through the use of the best genetics and careful selection with a strong emphasis on the traits that matter – growth rate, muscling, leanness and parasite resistance. Our flock is one of the highest performing in Australia, which is reflected by the fact that every ram in the sale is above the White Suffolk breed average in Lambplan. With a bright outlook forecast for the lamb industry, we look forward to providing you with the sheep and the service you require.

Ask yourself, do you want to breed this?

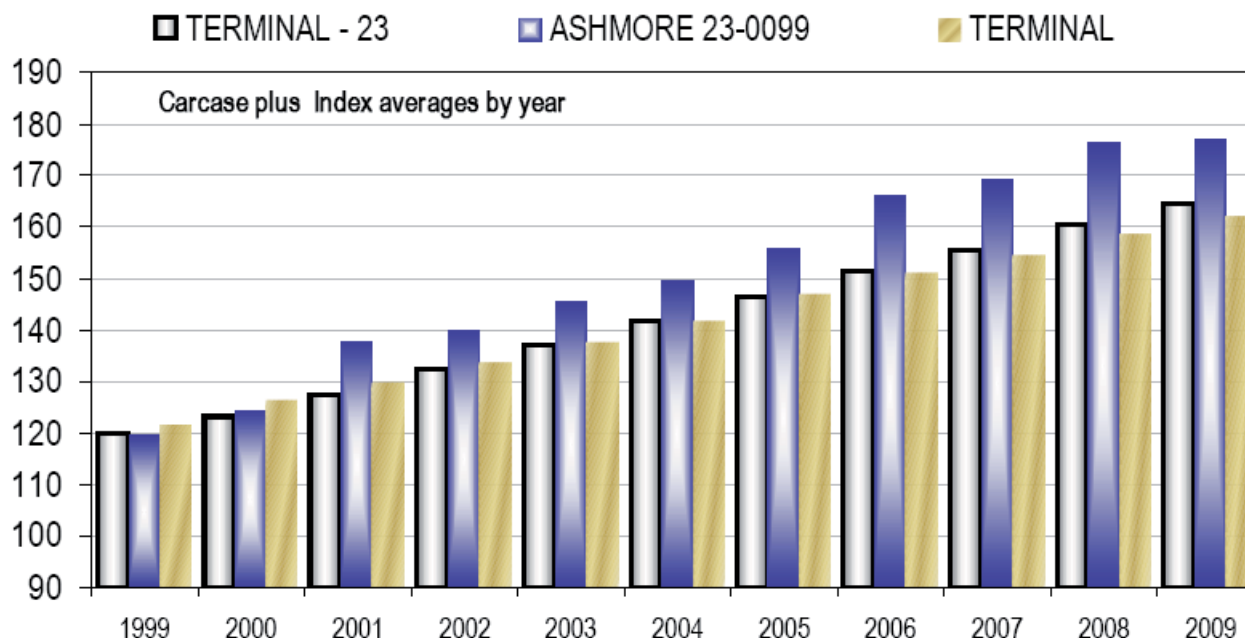


Or this?



2010 Ashmore Performance White Suffolk Ram Sale

The Fischer Family invite you to attend our 18th Annual Performance Ram Sale on Monday September 27, commencing at 1pm on our property at Ashmore, Wasleys. We believe that our genetics will increase productivity and profit in your prime lamb flock.



Ashmore Genetics excel within Lambplan across flock evaluation

Currently Ashmore has the 3 of the 6 highest White Suffolk rams in Australia as ranked on the Carcase Plus Index and 2 of the top 3 as ranked on LAMB2020 Index:

060263, C+ 213 Rank #1 L2020 \$115 Rank #2
 090069, C+ 209 Rank #4 L2020 \$114 Rnk #13
 080185, C+ 209 Rank #6 L2020 \$115 Rank #3

Such results really demonstrate our stud motto: Ashmore White Suffolks - "Genetics that Perform".

Superior Genetics

Each year we use the best genetics available for commercially important traits – growth, muscling, red meat yield and worm resistance. 100% of rams in this year's sale have ASBVs better than the breed average, which means their lambs will be more valuable in the sale yards and over the hooks. Demonstration of our genetic advantage is seen above where the 2010 sale team are 13 index points better than the average of the White Suffolk breed. All

ASBVs and indexes in this catalogue are from the Lambplan Across Flock Analysis on 15/8/10.

Quality Assured

MN3 accredited free from OJD, Ovine Brucellosis Accredited Free and guaranteed footrot and lice free.

All rams vaccinated with 6 in 1, drenched with Ivomec August 2010. Ashmore has an on-farm QA program applying to stock health, management and recording.

If you have any questions, feel free to speak with Brian (0428 826568) or Troy (0429 131277). Free luncheon – (roast lamb rolls!) – and refreshments available. We look forward to your company and attendance on Monday 27th of September.

Yours sincerely,
 Brian, Rhonda, Troy and Nette Fischer



Understanding LAMBPLAN ASBVs

Rams with lower ASBVs for birth weight (BWT) produce lambs with lower birth weight. Both low (lamb survival) and high (lambing difficulties) birth weights should be avoided.

Rams with more positive ASBVs for post weaning weight (PWT) produce lambs that grow quicker and reach target weights in a shorter time. This ram will produce lambs that are, on average, 3kg heavier at post weaning age (7.5 months) than a ram with an ASBV of 0.

Worm egg count (WEC) ASBVs estimate an animal's genetic potential for worm burdens. Lower WEC ASBVs are desirable. This ram will, on average, sire progeny that will have 5% fewer eggs/gram than a ram with an ASBV of 0.

Trait	BWT (kg)	WWT (kg)	PWT (kg)	PFAT (mm)	PEMD (mm)	WEC (%)	INDEX
ASBV	0.3	4	6.0	-1.5	1.0	-10	150
Acc	43	63	71	59	69	37	

Rams with a more positive ASBV for weaning weight (WWT) will, on average, produce lambs that grow quicker to weaning. This ram will produce lambs that are 2kg heavier than a ram with a 0 ASBV for WWT.

Rams with a more negative ASBV for post weaning fat (PFAT) will produce lambs that are leaner, at the same weight. This ram will produce lambs that are, on average, 0.75mm leaner at the GR site when compared to a ram with a FAT ASBV of 0.

Rams with more positive ASBVs for post weaning eye muscle depth (PEMD) produce lambs that have more muscle, independent of weight, and a higher lean meat yield. This ram will produce lambs that have, on average, a 0.5mm deeper eye muscle than a ram with a 0 EMD ASBV.

An index is a guide to the value of a ram for a particular market. Rams with higher indexes will produce lambs that are more suited to that particular market target. It is important to understand what market the index applies to before using an index.

• An ASBV of 0 is the average of the 1990 drop.

• Note: A useful rule of thumb for converting ram ASBVs into lamb production differences is to simply halve the ASBV (as rams contribute half the genetics of the lamb).

• Accuracy - published as a percentage, is a reflection of the amount of effective information that is available to calculate the ASBV. All ASBVs are now published with accuracies. The higher the percentage, the closer the ASBV is to the true breeding value of the animal. Breeding values without accuracies are Flock Breeding Values (FBVs) and can only be compared within the flock.

Across Breed Lambplan figures 15/8/10

	BWT	WWT	PWT	PFAT	PEMD	PWEC	LAMB2020	C +
Ashmore sale team Ave	0.3	7.8	12.6	-0.5	1.0	8	111	177
National Terminal Ave 2009	0.3	6.5	10.0	-0.7	0.7	-13	108	164
Difference	0.0	+1.3	+2.6	+0.2	+0.3	+21	+3	13

Information on ASBV's and indexes

All of the breeding values displayed on our sale rams are ASBVs meaning they meet the quality and accuracy standards that Lambplan set. This year we present the two indexes which we believe are most relevant to the prime lamb industry.

LAMB2020 Index: Emphasis on early growth at weaning and post-weaning, penalties for excessive fatness or leanness. Includes birth weight and improved parasite resistance and muscling. Ideal for producing 20-24 kg lambs out of merino ewes.

Carcase + Index: Calculated using 65% emphasis on growth, 5% emphasis on leanness and 30% emphasis on muscling. Does not include birth weight, weaning weight or worm resistance.

Changes to LAMBPLAN Analysis

Since the last ram selling season there have been a number of changes implemented in the LAMBPLAN analysis for all terminal breeds. As a result of these changes you may notice that the ASBVs reported this year show a slightly different range. It is important to note that these changes apply to all animals in the database and generally animals have not re-ranked. Animals that had previously ranked in the top 10% of the breed are generally still in the top 10%.

The most significant change is that Birth Weight (BWT) ASBVs have increased, the average value has increased by 0.1 kg. It is therefore recommended that producers increase their acceptable ranges for BWT by this amount. For example, if the heaviest BWT ASBV you have previously been prepared to use was +0.4 kg, that range could now be increased to +0.5 kg with the same birth weights resulting in the ram's progeny.

At the same time Weaning Weight (WWT) and Post Weaning Weight (PWT) ASBVs have on average decreased by 0.4 kg and 0.7 kg respectively. Index values have also decreased. For example, Carcase Plus (C+) values have on average decreased by approximately 5 points. Rams that would previously had C+ values of 185 may now be expected values around 180.

When using ASBVs and Indexes it is important to compare the individual animal's values to the terminal average. If you require any further information regarding the use of ASBVs and Indexes, please contact Troy on 0429131277.

Main Sires represented

Bundarra Downs 064398

Champion ram Adelaide Royal 2007. LAMB2020 \$114, C+ 209

Trigger Vale 060250

High performing sire within White Suffolk breed. LAMB2020 \$111, C+ 199

Farrer 040074

Heavily muscled outcross sire. Excellent WEC ASBVs. LAMB2020 \$115 C+ 193

Ashmore 080092

Used as a ram lamb. Sold for \$5000 in 2009. LAMB2020 \$111, C+ 190

Ashmore 070067

Excellent growth. LAMB2020 \$111, C+ 185

Farrer 070172

Used in Superwhites Progeny test. LAMB2020 \$113, C+ 177

Wingamin 070854

Outcross sire, half share purchased for \$5000. LAMB2020 \$108 C+ 176

Ashmore 000050

Widely used over 1100 progeny in 23 flocks. LAMB 2020 \$107, C+ 177

Ashmore White Suffolks 2010 Catalogue

Legend

A Ashmore

ASBV Australian Sheep Breeding Value

BD Bundarra Downs

BT Birth Type

C+ Carcase Plus Index

EMD Eye Muscle Depth

F Farrer

Fat Fat Depth

Lamb2020 Lamb 2020 Index

S Single

TW Twin

TR Triplet

TV Trigger Vale

WI Wingamin

WT Weight

WEC Worm Egg Count

8 White Suffolk Stud Rams

Lot	Tag	Born	BT	Sire	ASBVs						Indexes		Buyer	Price
					Birth	Weaning	Post Weaning			Lamb 2020	C+			
							WT	FAT	EMD			WEC		
1	69*	May	TW	TV250	0.4	10.3	16.3	-1.1	1.4	5	114	209		
*090069 is in top 1% of terminals for WWT, PWWT, LAMB2020 and C+ indexes. Currently ranked 4 th on LAMBPLAN Elite Sires list. Full brother (080092) sold for \$5,000 in 2009. Used as a ram lamb producing over 100 lambs in his first natural joining. Entered in CRC Pilot SNP trial. Ashmore retaining semen rights.														
2	34	May	S	W854	0.4	8.2	13.3	-0.4	0.5	7	110	177		
3	1	May	S	A92	0.4	8.2	12.6	-0.9	0.6	2	110	180		
4	151*	May	S	BD4398	0.6	9.2	14.7	-1.2	1.4	3	112	202		
*090151 is in top 1% of terminals for C+ index, top 2% for PWWT, top 3% for WWT and top 4% for Lamb 2020. Maternal half brother (080068) sold for \$5,000 in 2009.														
5	176	May	TW	W854	0.4	8.8	13.6	-0.5	0.6	19	110	180		
6	232*	May	TW	W854	0.4	9.7	16.0	-0.6	0.5	9	111	193		
*090232 is in top 1% of terminals for WWT and PWWT and top 4% of terminals for C+ index. Maternal half brother (080222) sold for \$4,500 in 2009. Used as a ram lamb and entered in CRC Pilot SNP trial.														
7	178*	May	TW	BD4398	0.5	8.8	14.2	-1.0	0.9	-8	112	192		
*090178 is in top 3% of terminals for PWWT and top 4% for C+ index and LAMB 2020 index.														
8	127	May	S	A50	0.4	8.7	13.9	-0.6	-0.3	21	108	176		

138 White Suffolk Flock Rams

Lot	Tag	Born	BT	Sire	ASBVs						Indexes		Buyer	Price
					Birth	Weaning	Post Weaning			Lamb 2020	C+			
							WT	WT	WT			FAT		
9	89	May	S	F74	0.4	9.2	14.6	-0.8	1.0	-2	112	192		
10	248	May	TW	W854	0.2	8.3	13.5	-0.3	0.8	7	110	179		
11	116	May	S	BD4398	0.5	8.3	13.8	-0.4	1.6	4	112	187		
12	289	May	TW	W854	0.3	8.5	13.8	-0.3	1.1	19	110	182		
13	222	May	TW	W854	0.4	8.4	13.8	-0.4	0.4	29	109	178		
14	214	May	TW	A92	0.5	8.9	13.5	-1.0	0.6	19	110	186		
15	75	May	TW	W854	0.3	8.5	13.9	-0.3	1.1	3	111	182		
16	150	May	S	A92	0.2	8.4	13.1	-0.8	1.0	22	110	185		
17	9	May	TW	W854	0.3	8.6	13.9	-0.5	0.8	18	110	182		
18	153	May	S	F74	0.3	8.0	12.5	-0.8	1.4	-38	112	185		
19	271	May	S	W854	0.1	7.4	12.7	-0.3	1.5	2	111	180		
20	19	May	TW	A92	0.4	7.8	12.2	-0.8	1.1	-23	111	181		
21	77	May	TW	TV250	0.0	8.0	13.0	-0.9	1.3	3	111	187		
22	76	May	TW	TV250	0.1	8.6	13.7	-1.3	0.6	-15	111	191		
23	14	May	S	F172	0.3	9.2	14.3	-0.4	1.7	25	111	191		
24	106	May	TW	BD4398	0.5	8.7	14.4	-0.8	1.1	23	111	192		
25	92	May	S	A50	0.5	8.9	13.7	-0.9	-0.3	21	108	180		
26	139	May	TW	W854	0.4	9.1	14.5	-0.4	0.3	34	109	180		
27	270	May	S	W854	0.2	7.9	12.8	0.2	1.6	45	109	174		
28	140	May	TW	W854	0.3	8.9	14.2	-0.4	0.4	32	109	180		
29	13	May	S	W854	0.4	8.1	13.4	-0.2	0.4	15	109	174		
30	22	May	S	A67	0.4	7.8	12.6	-1.0	0.7	-22	111	182		
31	231	May	TW	A92	0.3	7.9	11.9	-0.9	1.1	-17	111	181		
32	288	May	S	W854	0.5	8.4	13.5	-0.5	0.0	29	108	175		
33	221	May	S	W854	0.2	8.2	13.1	-0.5	0.6	35	109	177		
34	16	May	TW	A92	0.3	8.2	12.9	-0.8	0.6	4	110	181		
35	172	May	TW	A50	0.5	8.1	12.8	-0.3	0.1	36	107	170		
36	64	May	S	A50	0.4	8.6	13.4	-0.7	0.4	8	110	180		
37	18	May	TW	A92	0.4	8.4	13.0	-0.9	0.8	6	110	184		
38	216	May	S	W854	0.2	7.8	12.8	-0.2	1.2	0	110	177		
39	157	May	TW	A92	0.1	7.3	12.2	-0.6	1.0	4	111	184		
40	212	May	TW	W854	0.3	8.0	12.8	-0.1	0.6	32	108	171		
41	255	May	TW	W854	0.3	7.7	12.4	-0.3	0.4	42	107	170		
42	272	May	TW	W854	0.3	7.9	12.2	-0.3	0.7	18	109	171		
43	276	May	S	W854	0.4	7.4	11.3	-0.6	0.4	38	107	168		
44	95	May	TW	W854	0.4	7.9	12.7	-0.5	-0.1	23	108	171		
45	88	May	S	A67	0.3	7.0	11.2	-0.5	1.3	-15	110	173		
46	273	May	TW	W854	0.2	7.0	11.1	0.1	1.4	14	109	166		
47	8	May	TW	W854	0.3	8.7	14.0	-0.6	1.0	36	110	186		
48	179	May	TW	BD4398	0.4	7.6	13.0	-0.9	0.9	-1	110	184		
49	31	May	S	A50	0.2	7.3	10.7	-0.3	1.1	24	108	167		
50	46	May	S	W854	0.3	7.7	12.5	0.1	0.5	32	108	165		
51	198	May	TW	A92	0.3	7.0	10.7	-0.5	1.4	22	109	171		
52	210	May	TW	A67	0.3	7.1	11.8	-0.3	1.8	9	110	177		
53	121	May	TW	BD4398	0.5	9.1	15.0	-0.7	1.0	0	112	194		
54	109	May	TW	TV250	0.4	9.9	15.5	-1.2	0.4	3	111	195		

Lot	Tag	Born	BT	Sire	ASBVs						Indexes		Buyer	Price
					Birth	Weaning	Post Weaning				Lamb 2020	C+		
							WT	WT	WT	FAT				
55	110	May	TW	TV250	0.3	9.2	14.0	-1.1	1.0	3	112	193		
56	49	May	S	F74	0.2	7.4	12.3	-0.4	2.1	-28	113	184		
57	152	May	S	F74	0.3	7.8	12.7	-0.6	1.7	-36	113	185		
58	47	May	TW	F74	0.2	6.9	11.6	-0.4	1.5	-12	111	176		
59	330	July	TW	W854	0.5	8.9	14.9	-0.3	0.9	26	110	186		
60	120	May	TW	BD4398	0.4	7.2	11.8	-0.8	1.8	0	111	184		
61	314	July	TW	A92	0.4	9.2	13.5	-0.9	0.9	9	111	187		
62	196	May	S	A92	0.1	7.5	12.3	-0.7	1.6	3	111	184		
63	82	May	TW	F172	0.4	9.0	14.9	0.2	1.5	7	112	185		
64	4	May	TW	A67	0.3	7.5	12.9	-0.7	1.3	16	110	184		
65	329	July	TW	W854	0.5	8.8	14.9	-0.3	0.9	26	110	186		
66	101	May	TW	F74	0.3	8.1	12.8	-0.5	1.3	-8	111	182		
67	211	May	TW	A67	0.3	7.2	12.5	-0.3	1.6	-16	111	180		
68	327	July	TW	W854	0.4	9.1	14.4	-0.3	0.3	23	109	179		
69	158	May	TW	A92	0.1	7.1	11.6	-0.7	1.9	0	111	183		
70	206	May	TW	W854	0.4	8.1	13.3	-0.1	0.7	19	109	174		
71	319	July	S	W854	0.3	7.8	12.8	-0.3	0.6	24	109	173		
72	290	May	TW	W854	0.2	7.6	12.8	-0.3	1.2	14	110	178		
73	226	May	TW	W854	0.4	8.1	13.1	-0.5	0.3	4	109	176		
74	263	May	TW	W854	0.3	8.1	13.6	0.0	1.1	27	110	177		
75	208	May	TW	A67	0.4	7.8	13.5	-0.8	0.5	-21	111	182		
76	135	May	TW	A50	0.4	8.5	13.4	-0.5	0.8	39	109	181		
77	280	May	S	W854	0.3	7.8	13.0	-0.1	1.1	11	110	176		
78	23	May	TW	A67	0.5	7.3	11.7	-0.9	0.7	-10	110	177		
79	301	June	S	W854	0.3	7.2	11.5	-0.7	1.0	3	109	175		
80	33	May	S	A50	0.3	7.9	12.5	-0.2	1.0	8	110	174		
81	267	May	S	W854	0.4	8.0	12.6	-0.3	-0.1	27	107	166		
82	278	May	S	W854	0.3	7.8	12.1	0.1	1.0	34	108	169		
83	155	May	S	A67	0.2	7.1	11.4	-0.1	0.8	4	109	165		
84	204	May	S	W854	0.4	6.8	10.8	-0.4	0.5	12	108	164		
85	184	May	TW	A92	0.2	7.1	11.5	-0.9	0.8	-3	109	176		
86	161	May	TW	F74	0.3	7.7	12.4	-0.9	1.3	-36	112	184		
87	235	May	TW	W854	0.2	7.1	11.5	-0.1	0.8	25	108	166		
88	185	May	TW	W854	0.2	7.5	11.8	-0.1	1.1	-4	110	171		
89	338	Aug	TW	W854	0.3	8.3	13.3	-0.3	0.3	34	108	174		
90	45	May	TW	F172	0.2	8.1	13.3	0.4	1.9	-7	112	177		
91	236	May	TW	W854	0.3	7.1	11.9	-0.2	0.7	20	108	169		
92	275	May	S	W854	0.2	7.4	12.3	-0.1	0.6	9	109	168		
93	87	May	TR	F74	0.2	7.9	13.3	-1.0	1.6	-24	113	193		
94	174	May	TW	BD4398	0.5	8.9	14.3	-1.0	1.2	5	112	194		
95	343	Aug	TW	W854	0.4	8.8	13.9	-0.1	0.4	40	108	176		
96	191	May	TW	W854	0.3	8.4	13.4	-0.2	0.5	33	108	173		
97	115	May	S	F74	0.3	7.4	11.9	-0.5	2.0	-15	112	182		
98	287	May	TW	A69	0.3	9.3	14.3	-0.5	0.6	7	111	185		
99	260	May	S	W854	0.2	7.5	12.9	-0.1	1.6	-5	111	179		
100	56	May	TW	F74	0.1	7.1	12.4	-0.6	1.4	-43	112	181		

Lot	Tag	Born	BT	Sire	ASBVs						Indexes		Buyer	Price
					Birth	Weaning	Post Weaning				Lamb 2020	C+		
					WT	WT	WT	FAT	EMD	WEC				
101	57	May	TR	F74	0.2	7.8	13.1	-1.1	1.0	-36	112	189		
102	102	May	TW	F74	0.3	8.1	12.6	-0.4	1.5	-8	111	180		
103	308	Jun	TR	A67	0.3	7.7	12.7	-0.8	0.7	15	109	180		
104	44	May	TW	F172	0.3	7.9	13.1	0.5	2.1	-18	112	175		
105	318	July	S	A92	0.3	7.5	11.4	-0.7	1.4	9	110	177		
106	339	Aug	TW	A92	0.2	7.1	10.9	-0.7	1.4	-7	110	176		
107	134	May	TW	A50	0.5	8.8	14.0	-0.6	-0.4	34	108	176		
108	146	May	TW	F74	0.1	7.5	12.5	-0.7	1.4	-40	112	184		
109	331	Aug	TW	W854	0.3	7.7	12.3	-0.7	0.3	27	108	173		
110	297	May	S	A67	0.3	7.1	11.5	-1.0	0.7	-29	176	110		
111	333	Aug	TR	A92	0.2	7.3	11.8	-0.7	0.9	29	108	175		
112	239	May	S	A92	0.1	6.7	10.7	-1.0	0.9	10	109	174		
113	84	May	TW	TV250	0.1	7.8	12.2	-0.9	0.6	0	110	178		
114	54	May	TW	F74	0.2	7.0	11.5	-0.6	1.4	-11	111	177		
115	144	May	TR	F74	0.2	7.4	12.6	-0.3	2.1	-42	113	184		
116	53	May	TW	F74	0.2	6.8	11.3	-0.7	1.3	3	110	176		
117	218	May	TW	A92	0.3	7.9	12.2	-0.3	1.5	5	110	177		
118	322	July	TR	A92	0.3	7.8	11.9	-0.7	1.2	7	110	178		
119	328	July	TW	W854	0.4	8.4	13.7	-0.2	0.3	23	109	175		
120	336	Aug	TW	W854	0.3	8.1	13.2	-0.4	1.2	12	110	182		
121	142	May	TR	W854	0.2	7.1	11.3	-0.1	0.7	47	107	164		
122	228	May	TW	W854	0.3	7.3	11.6	0.0	1.1	42	108	168		
123	305	Jun	TW	A67	0.3	6.7	11.0	-0.4	0.7	-10	109	166		
124	3	May	S	F74	0.0	5.3	9.6	-0.2	1.7	-9	109	165		
125	312	July	TW	A92	0.3	7.4	10.7	-0.4	1.8	5	110	174		
126	224	May	TW	W854	0.2	7.1	11.4	0.3	1.1	24	109	164		
127	316	July	TR	A92	0.3	7.1	11.2	-0.8	0.6	-1	109	172		
128	293	May	TW	W854	0.3	7.3	12.1	-0.1	0.3	35	107	165		
129	199	May	TR	A92	0.2	6.8	11.2	-0.2	1.4	35	108	170		
130	165	May	TR	A92	0.3	7.1	12.1	-0.5	0.9	38	108	175		
131	230	May	TW	A92	0.3	7.3	11.0	-0.9	1.1	-50	112	176		
132	345	Aug	TW	A92	0.4	7.5	11.4	-0.7	1.4	7	110	178		
133	141	May	TR	W854	0.2	7.4	11.7	-0.1	0.5	19	108	165		
134	351	Aug	TW	A92	0.4	8.0	11.5	-1.0	0.5	11	109	176		
135	240	May	TR	A92	0.1	6.7	11.0	0.4	2.1	38	109	167		
136	325	July	S	W854	0.3	7.0	12.1	-0.2	1.2	4	110	172		
137	61	May	S	F172	0.1	7.0	11.1	0.4	1.7	-11	110	165		
138	213	May	TW	W854	0.1	7.5	11.9	-0.3	0.7	23	108	170		
139	358	Aug	S	W854	0.3	8.1	13.0	0.1	0.5	41	108	169		
140	316	July	TR	A92	0.3	7.1	11.2	-0.8	0.6	-1	109	172		
141	283	May	TW	A67	0.3	5.9	9.6	-0.6	0.8	12	164	107		
142	277	May	S	A67	0.3	6.6	10.0	-0.3	1.3	-22	110	164		
143	307	Jun	TR	A67	0.3	7.2	11.7	-0.8	0.8	43	108	176		
144	187	May	TW	W854	0.2	6.7	11.5	0.0	0.9	17	108	165		
145	62	May	S	A50	0.4	7.7	11.3	-0.1	0.4	7	108	164		
146	291	May	TW	A67	0.3	6.6	10.4	-0.5	0.5	3	108	164		

Selling agents

Elders Ltd

Roseworthy Branch: 08 85248333

Matt Ward: 0407 069964

Landmark

Gawler Branch: 08 85222266

Ashley Read: 0429 806023

Ashmore

Brian Fischer: 08 85254068 or 0428 826568

Troy Fischer: 08 85254378 or 0429 131277

