



ASHMORE
WHITE SUFFOLKS

Genetics that Perform

NEWSLETTER

July 2010

Outlook for Lamb Prices

According to Meat and Livestock Australia (MLA), lamb prices are expected to average even higher in 2010/11 across all categories. National average sale yard prices during the calendar year to April 2010 averaged 11-28% higher (depending on category) than the same period last year averaging over \$4.50/kg cwt for the period, which is great news for all of us.

Caption: Nette and Troy Fischer with the MLA / AWI Sheep Genetics Manager, Sam Gill and Luke Stephen inspecting some of the 2010 sale rams.



2010 Sale Team – The sires we used

Each year we search the entire country to infuse the very best genetics into our stud. The main sires used in this year's sale team are worth writing about – be sure to look out for their progeny in this year's sale.

Farrer 040074 has over 2000 progeny across Australia in 46 different studs. Through the use of AI, we have more progeny by this ram in our stud than any other stud in Australia. He is a real all rounder producing progeny with low birth weights, rapid early growth and exceptional muscle as well as being a trait leader for worm resistance. It's no surprise his sons usually sell like hot cakes.

Bundara Downs 064398 is one of the highest performing sires in Australia and has been widely used at Ashmore for that reason. He leaves early maturing progeny with clean heads, excellent structure and muscling.

Trigger Vale 060250 is another one of the breed's top proven sires. His sons were highly sought after at last years sale with 4 sons sold as stud rams. His progeny are tall and long, have good breed type and tremendous growth.

Ashmore 080092 was sold at last year's sale for \$5,000. We used him as a ram lamb at 7 months of age and he left over 100 lambs which is a pretty good effort. His progeny have low birth weights, good growth and excellent muscling.

Wingamin 070854 was 1st at the Adelaide Royal Show 2008 and Ashmore purchased a half share for \$5,000. His progeny look terrific, have rapid early growth, low birth weight and great hindquarters.

SIRE	BWT	WWT	PWT	PFAT	PEMD	PWEC	C+	L2020
Farrer 040074	-0.12	7.6	13.8	-0.4	3.3	-53	202	116
Bundarra Downs 064398	0.57	10.3	17.8	-0.9	2.0	-7	217	115
Trigger Vale 060250	-0.04	10.6	16.2	-1.4	0.7	16	205	112
Ashmore 080092	-0.11	8.7	12.8	-0.7	2.1	17	191	112
Wingamin 070854	0.17	8.8	15.6	0.1	0.8	75	183	108

2010 Sale Team – Displaying Exceptional Performance

The ram sale team is looking well despite a very tight feed year. With our breeding program heading in the right direction for every major trait, each drop represents a steady accumulation of better genetics than the previous year. It is fair to say that the ram team to be offered this year represents some of the best genetics in the White Suffolk breed. There will be high performing rams in the sale to suit every market and environment. You can view the Lambplan figures of our 2009-drop sale rams on our website: www.ashmorewhitesuffolks.com/sales.

The Ashmore sale team Carcase Plus Index average is 185 points, while the national Carcase Plus Index average for the 2009 drop is 170 – a huge difference! This means every Ashmore sale ram is going to produce you more valuable lambs than breed average White Suffolk rams. This gap is widening because our stud is improving at a faster rate than the rest of the White Suffolk breed and other Terminal breeds. The sale team display excellent growth rates (turn lambs off faster or heavier weights) and impressive muscling (higher value carcasses).

Our **Annual on property ram sale is on Monday 27th of September @ 1pm** – and don't forget Rhonda's famous roast lamb rolls for lunch! Be sure to mark this date on your calendar, we look forward to seeing you then.

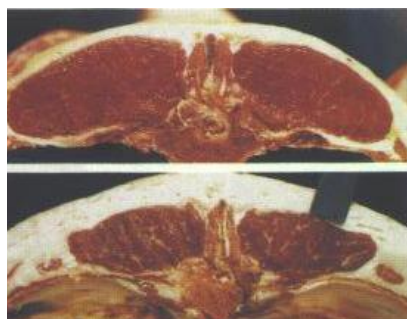
Yours sincerely,
Brian, Rhonda, Troy and Nette Fischer

Contact Details

Brian	Troy
P: 08 85254068	08 85254378
M: 0428826568	0429131277

Do you want to breed this?

Or this?



Ask yourself...

www.ashmorewhitesuffolks.com

