



ASHMORE
WHITE SUFFOLKS
 Genetics that Perform

NEWSLETTER

February 2011

Breeding program ramps up at Ashmore

During September, Ashmore purchased two outstanding sires at the Farrer ram sale. Both rams are structurally correct, have exceptional muscling in the hindquarter, good growth and worm resistance as well as low birth weight.

They both rank in the top 1% of terminal sires for the LAMB2020 index and will accelerate our breeding program for all key traits. Both rams are being used heavily this year, so look out for their progeny in 2012.

During December, we embarked on an Embryo Transfer (ET) program flushing five of our elite ewes and transferring 47 embryos into recipient ewes.

The sires used in our ET program were:

- Langley Heights 060073 - Ranked 1st on LAMB2020
- Ashmore 090069 - Ranked 2nd on Carcase + and 6th on LAMB2020
- Bundara Downs 086028 – Sold for \$20,000, Ranked 20th on LAMB2020

We are eagerly awaiting the lambs to arrive from this program and hope that our next top sires and some really handy ewes emerge from it.

Farrer 090078



Purchased for \$4,500

Farrer 090138



Purchased for \$4,800

TAG	BWT	WWT	PWT	PFAT	PEMD	PWEC	NLW	C+	L2020
090078	0.22	8.7	13.9	-0.1	2.1	-29	2	188	113.6
090138	0.35	7.5	13.0	-0.2	2.9	-34	12	190	114.3

Client Feedback

A client of ours who is based near Jamestown, SA recently provided us with some feedback on our rams.

Every year, prior to using Ashmore rams a large portion of his lambs were not ready for sale in spring, so he had to shear them as well as feed them through summer to get them saleable.

Since purchasing Ashmore rams for the past 2 years, he now turns off over 90% of his lambs in spring straight off their mothers.

This is very pleasing feedback and it reinforces that our breeding objective of selecting for rapid early growth in our rams does actually put more money in our client's pockets.

If you have some feedback on our rams of any kind we would love to hear it.

Ashmore genetics top LAMBPLAN

A 2010 drop Ashmore ram lamb, 100286, is currently the top ranked White Suffolk male progeny in Australia on the LAMB2020 index.

To put this in perspective, over 15,000 2010 drop White Suffolk ram lambs were tested by LAMBPLAN. Ashmore sheep are at the top of the tree!

Ashmore 100286 is \$115 on the LAMB2020 index and has exceptional Post Weaning ASBVs of +16.4kg for weight and +2.0mm for Eye Muscle Depth.

We are using him over a selection of ewes this summer to see how his progeny perform.

In the current Elite Sires List, Ashmore has bred 4 of the top 8 White Suffolk Sires in Australia as ranked on the LAMB 2020 Index, reinforcing our motto "*Genetics that Perform*"

Another Fischer arrives!

On 15 November 2010, Nette and Troy's second baby was born.

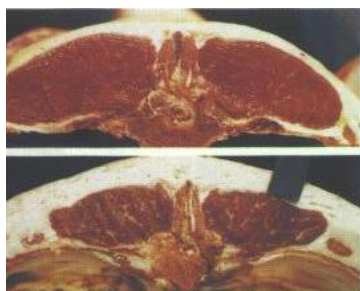
Indigo arrived at the hospital with 3 minutes to spare – another set of traffic lights and Troy may have had to deliver the baby on the side of the road – close call!

We hope that 2011 has started well for you and the season is a prosperous one for all.

Yours sincerely,
Brian, Rhonda, Troy and Nette Fischer

PS – Our 19th on-property ram sale is on Monday 26th of September

Ask yourself....



Do you want
to breed this?

Or this?

Contact Details

Brian	Troy
08 85254068	08 85254378
0428826568	0429131277



ASHMORE
WHITE SUFFOLKS
Genetics that Perform

www.ashmorewhitesuffolks.com