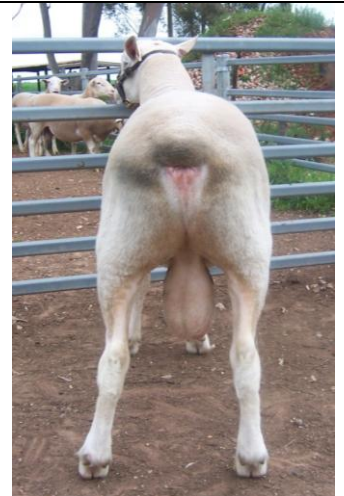




ASHMORE
WHITE SUFFOLKS
Genetics that Perform

2010/11 Semen Catalogue

Ashmore 090069



- Sold for \$6,000 at on property sale to Richard Hawkins, Thurlstone Stud
- 090069 is in the top 1% of terminals for WWT, PWWT, LAMB2020 and C+ indexes
- LAMBPLAN WS Elites – ranked 2nd on Carcase Plus and 2nd on Lamb2020
- Used as a 7 month old ram lamb producing over 100 lambs through natural joining
- Selected in Superwhites progeny test and entered in CRC Pilot SNP trial
- \$1,500/30 doses

TAG	BWT	WWT	PWWT	PFAT	PEMD	C+	L2020
090069	0.47 (87%)	11.1 (89%)	17.3 (87%)	-1.2 (88%)	1.6 (90%)	215 (85%)	114.3 (85%)

*LAMBPLAN Figures current as of 15/12/2010

Contact Troy 0429 131277 or Brian 0428 826568
www.ashmorewhitesuffolks.com



ASHMORE
 WHITE SUFFOLKS
 Genetics that Perform

2010/11 Semen Catalogue

Semen also available in the following Ashmore rams - \$1,200/30 doses.

Ashmore 080097

Ashmore 080185

Ashmore 080092



Attracted a lot of interest at 2009 Royal Adelaide Show. Exceptional muscle pattern, excellent structure. Half share sold for \$4,000.

8th on LAMB 2020 index in White Suffolk Elite Sires. Sold for \$4,000 at on property sale.

Full brother to 090069. Used as a ram lamb and left >100 lambs through natural joining. Selected in Superwhites progeny test. Sold for \$5,000 at on property sale.

TAG	BWT	WWT	PWWT	PFAT	PEMD	C+	L2020
080097	0.51 (95%)	8.3 (95%)	14.0 (93%)	-1.0 (93%)	1.0 (94%)	192 (92%)	112 (88%)
080185	0.27 (88%)	8.3 (95%)	14.6 (89%)	-0.1 (88%)	3.2 (89%)	200 (86%)	114 (82%)
080092	0.16 (93%)	7.3 (94%)	11.9 (92%)	-0.9 (89%)	1.6 (91%)	184 (89%)	110 (89%)

*LAMBPLAN Figures current as of 15/12/2010

Contact Troy 0429 131277 or Brian 0428 826568
www.ashmorewhitesuffolks.com